



Information

9/8/24

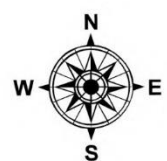
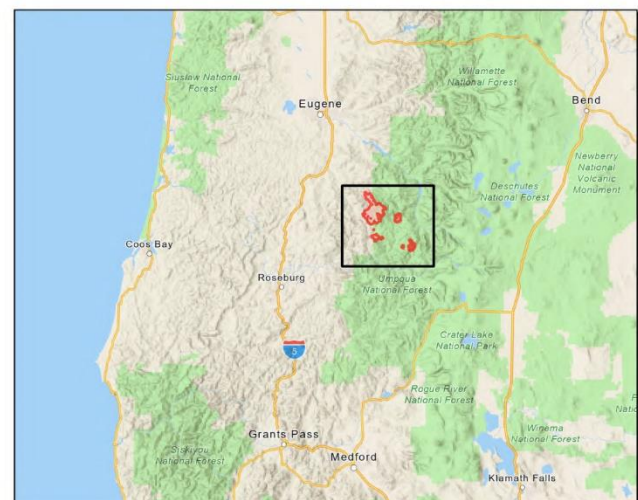
Homestead Complex
OR-UPF-240311

7672 acres at 9/07/2024 @ 0232 PDT

Cottage Grove - Lane 1
OR-771S-000028

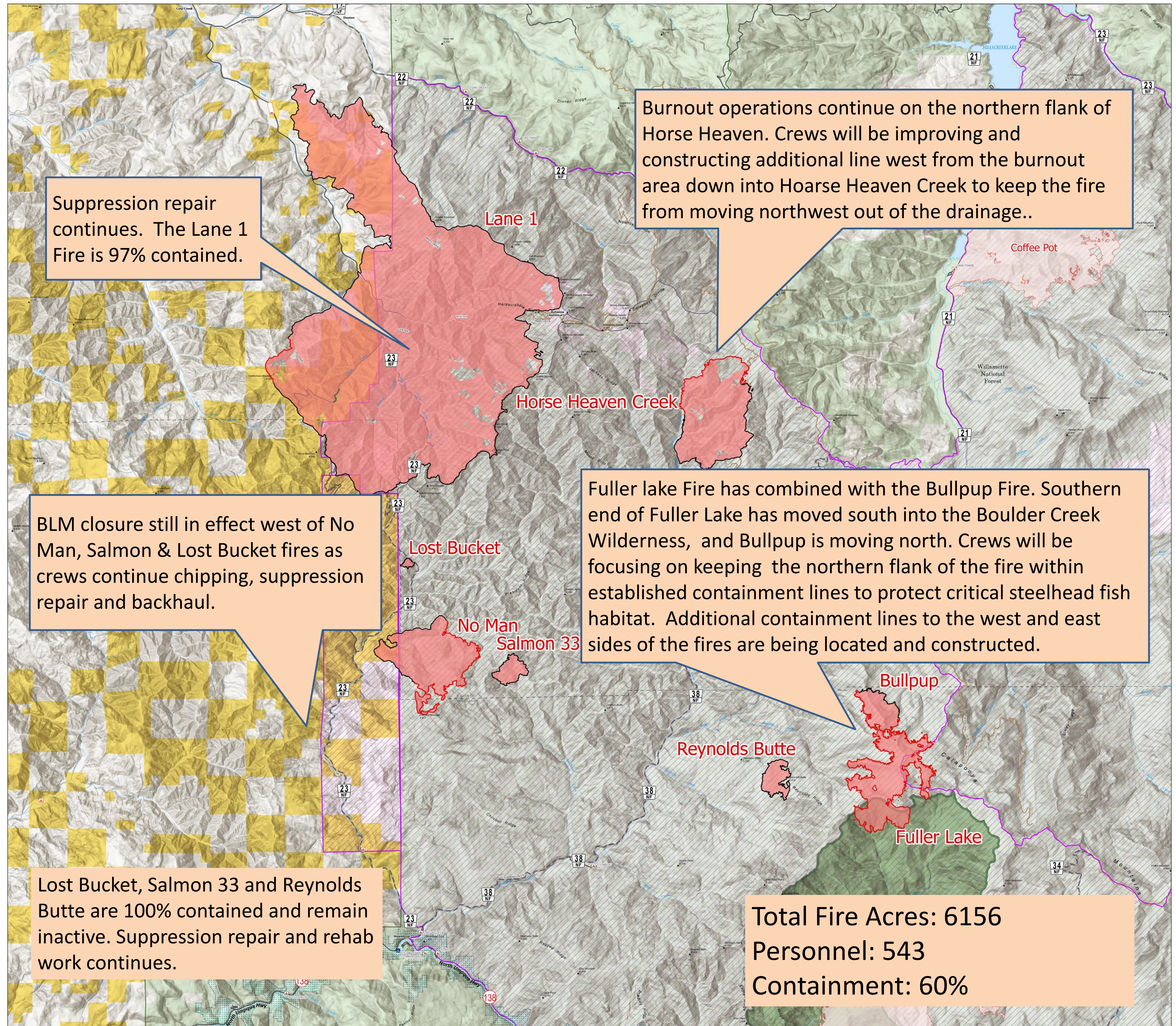
25,884 acres at 9/7/2024 at 0217 PDT

- Contained
- Uncontained
- Wildfire Daily Fire Perimeter - Homestead Complex;
- Wildfire Daily Fire Perimeter - Adjacent Incidents
- FS Wilderness Boundary
- Bureau of Land Management Lands
- Forest Service Land
- Forest Service Closure Area
- BLM Closure Area
- Road, Paved
- Road, Dirt/Gravel



0 2 4 Miles
0 2 4 Kilometers

1:50,926 | NW8 | 9/7/2024 0734
IR Flight
North American 1983 Datum, Lat/Long Grid



Suppression repair continues. The Lane 1 Fire is 97% contained.

Burnout operations continue on the northern flank of Horse Heaven. Crews will be improving and constructing additional line west from the burnout area down into Hoarse Heaven Creek to keep the fire from moving northwest out of the drainage..

BLM closure still in effect west of No Man, Salmon & Lost Bucket fires as crews continue chipping, suppression repair and backhaul.

Fuller lake Fire has combined with the Bullpup Fire. Southern end of Fuller Lake has moved south into the Boulder Creek Wilderness, and Bullpup is moving north. Crews will be focusing on keeping the northern flank of the fire within established containment lines to protect critical steelhead fish habitat. Additional containment lines to the west and east sides of the fires are being located and constructed.

Lost Bucket, Salmon 33 and Reynolds Butte are 100% contained and remain inactive. Suppression repair and rehab work continues.

Total Fire Acres: 6156
Personnel: 543
Containment: 60%